

# City of Warren Engineering



*Through the Years*



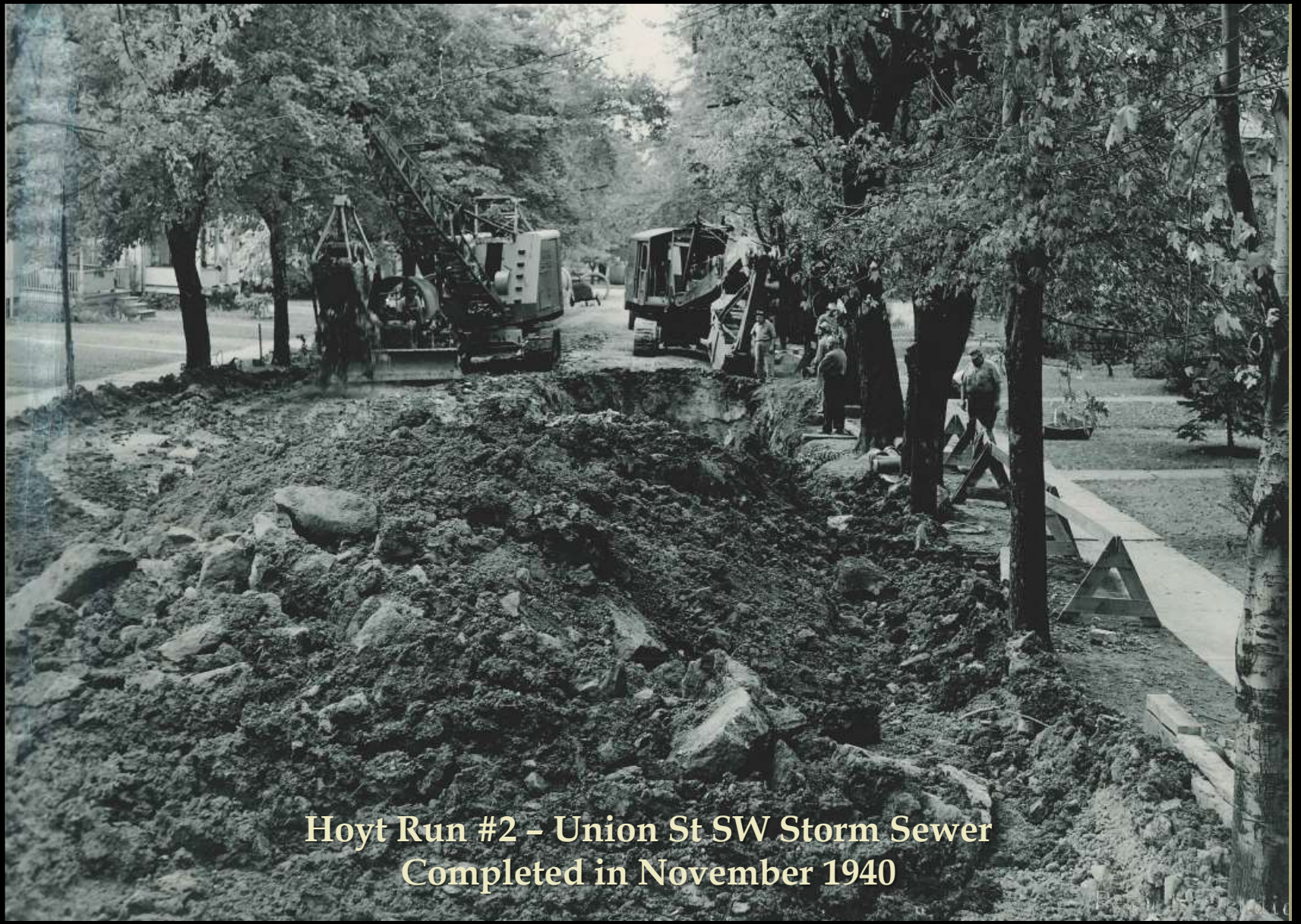
NORTH TOD AVE. BEFORE PAVING LOOKING SOUTH  
TO L.O. TURNER PROPERTY SEPT. 12, 1924.



*Pine Ave Widening & Storm - 1984*



Lovers Lane Phase 1 - September 29, 2011  
Excavation for regrading and removal of vertical curve



**Hoyt Run #2 - Union St SW Storm Sewer  
Completed in November 1940**



**Lovers Lane Phase 2 – August 16, 2012  
Roadway reconstruction with storm sewer & waterline.**



*Pine Ave Widening & Storm - 1984*



*Tod Ave NW Reconstruction & Safety - 1993*





Dana Street NE - 1949 WPA Project  
"Retreading" (Chip Seal)

Perich Studio  
WARREN, OHIO



**Willard Ave SE Reconstruction & Widening  
Limestone base & new curb. - Summer 2008**



*Fifth Street SW - 1983*



*Tod Ave NW Reconstruction & Safety - 1993*



WEST MARKET ST. BEFORE RAISING AND WIDENING  
LOOKING WEST FROM BRIDGE  
OCT. 3, 1925



WEST MARKET ST SHOWING FILL COMPLETED  
LOOKING WEST FROM BRIDGE  
MARCH 11 1926



WEST MARKET ST AFTER RAISING AND WIDENING  
LOOKING WEST FROM BRIDGE  
AUG 15 1926



TRU - West Market St - August 3, 2015  
Applying asphalt to West Market just west of the bridge.





Roosevelt St NW - 1948  
New Concrete Roadway

Photo Studio  
www.1940s.com



*Tod Ave NW Reconstruction & Safety - 1993*



*Fifth Street SW - 1983*

**TRU - Pine Ave  
Concrete Repairs - September 20, 2013**





WEST MARKET STREET  
FROM AUSTIN AVE. LOOKING EAST.  
BEFORE WIDENING AND REPAVING  
AUG. 1927.



WEST MARKET STREET  
FROM AUSTIN AVE. LOOKING EAST  
AFTER WIDENING AND REPAVING  
NOV. 1928.



TRU - West Market St - August 3, 2015  
East of Austin Ave . - Applying tack before resurfacing with asphalt.



West Market St - 1948  
In front of Peerless Electric





2015 OPWC / CDBG Roads  
Installing Storm Sewer at Tod Ave & Englesson Dr. NW



Repairing Parkman Road N.W.  
U. S. Route #422  
Removing & cleaning brick  
June 7, 1933.



2014 City Roads Project - September 10, 2014  
Brick Repair on South St SE



**Water Stand Pipe on Genesee Ave NE  
Pouring Concrete Foundation - July 1926**



2013 OPWC Roads Project  
Concrete Repairs on Atlantic St NE

Water Stand Pipe on Genesee Ave NE  
Pouring Concrete Foundation - July 1926





2013 OPWC Roads Project  
Concrete Repairs on Atlantic St NE



*Pine Ave SE Widening & Storm Sewer - 1983*





**Mahoning Ave Lighting Project – Fall 2010  
Pouring concrete foundation for decorative pedestrian lighting.**





Sanitary Sewer Lateral Inspection 2012

**Sewer across Burton St SE near railroad  
1949**





**Comstock Street Reconstruction  
Storm Sewer Installation June 16, 2004**



Furich Studio  
WASHINGTON, D.C.

HARRISON ST. N.E. STORM RELIEF SEWER - Property of Clifford & M.L. Pearson - LOOKING WEST FROM LAIRD A



*Pine Ave SE Widening & Storm Sewer - 1984*



**Parkman Road Phase 2 - 2011  
Storm Sewer Installation**





*Red Run Combined Sewer (West Branch) - Tunnel Under Erie R.R. (Mainline) - Nov. 194*

RELAYING BRICK, NILES AVE.  
JULY, 1937





High Street Decorative Crosswalks  
June 2010

RELAYING BRICK, NILES AVE.  
JULY, 1937





East Market Street Decorative Crosswalks  
June 10, 2009



East Market Street Decorative Crosswalks  
May 29, 2009

*REMOVING CONCRETE HEADERS  
B. & O. CROSSING, NILES AVE.  
JULY, 1937*





**Brick Street Repairs – 2014 City Road Project  
Jackhammering to remove old concrete – September 2014**





**Decorative Brick Crosswalks - East Market Street Project  
Jackhammering old brick base - June 2009**

RELAYING BRICK  
B. & O. CROSSING, NILES AVE.  
JULY, 1937





**Brick Street Repairs – 2014 City Road Project  
Stamping pattern – September 10, 2014**

*RELAYING BRICK, NILES AVE.  
JULY, 1937*

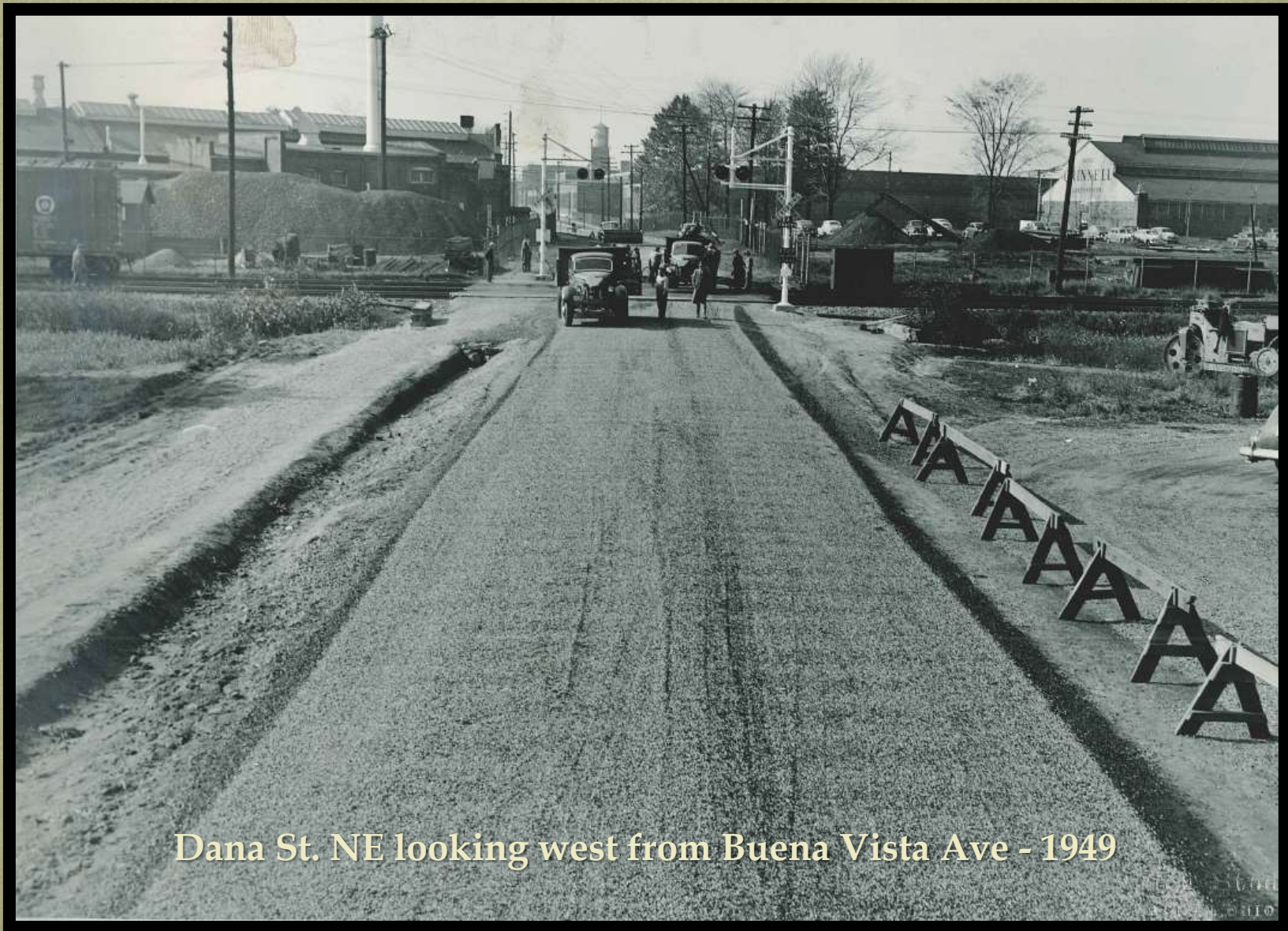




**TRU - West Market Street - August 13, 2015  
Curb Ramp Truncated Dome Installation**



*Downtown Streetscapes Project - 1983*



Dana St. NE looking west from Buena Vista Ave - 1949



Willard Ave SE Reconstruction - September 15, 2008





*Pine Ave Widening & Storm - 1984*



West Ave NW - 1948  
Base for Concrete Road



**Lovers Lane Reconstruction Phase 2  
Base for roadway reconstruction to remove vertical curve**



*Pine Ave Widening & Storm - 1984*



*Tod Ave NW Reconstruction & Safety - 1993*



Fremont Ave NE Manhole Adjustments - 1949



**Mahoning Ave NW - 2010  
Manhole Adjustments**



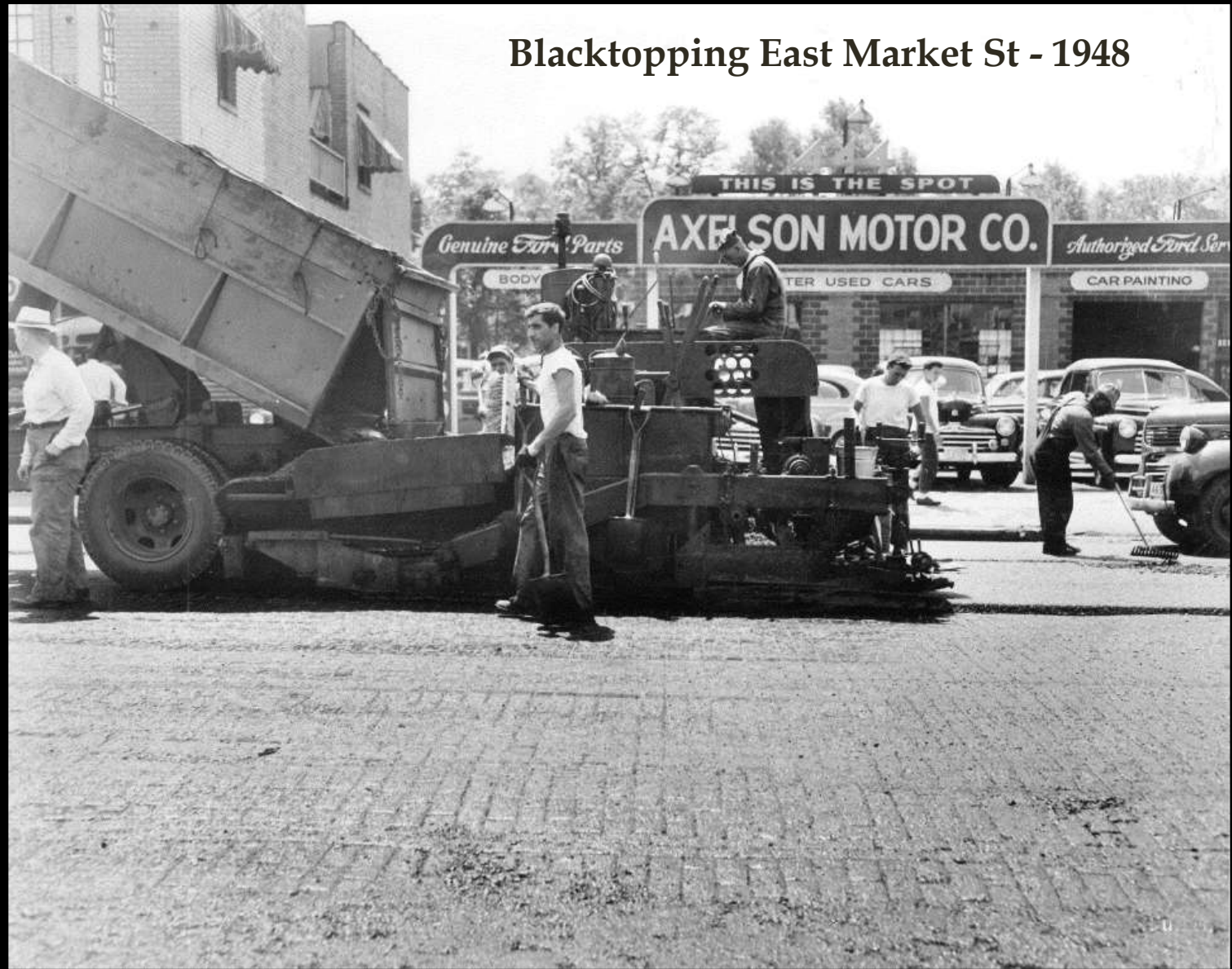
Street Cleaner in front of St Joseph's Church on North St. NW - 1949





Street cleaning after milling on West Market Street - 2015

## Blacktopping East Market St - 1948





Mahoning Ave NW Resurfacing - 2010



Repair work on Logan Ave north of High St NE - 1949



Crack Sealing on Nevada Ave SW - 2012



Summit St NW - 1949



*Tod Ave NW Reconstruction & Safety - 1993*

**Willard Ave SE Reconstruction & Widening – September 18, 2008**  
**New Storm Inlets at intersection of Colonial & Willard**







City Barn Paint Shop - 1949



Pine Ave Reconstruction – September 4, 2013



*EAST MARKET STREET  
SHOWING SET BACK OF BUILDINGS  
LOOKING EAST FROM PARK AVE.  
NOV 25 1926*



Crack Sealing East Market Street - November 2015



Slag Pile by City Barn - 1949



Parkman Road NW Phase 2 - 2011



RED RUN COMBINED SEWER EXTENSION  
NORTH OF DANA ST. N.E.

W.P.A. PROJECT NO. 1-13-5143

JUNE 26, 1937



Parkman Road Bridge - ODOT Project - 2012

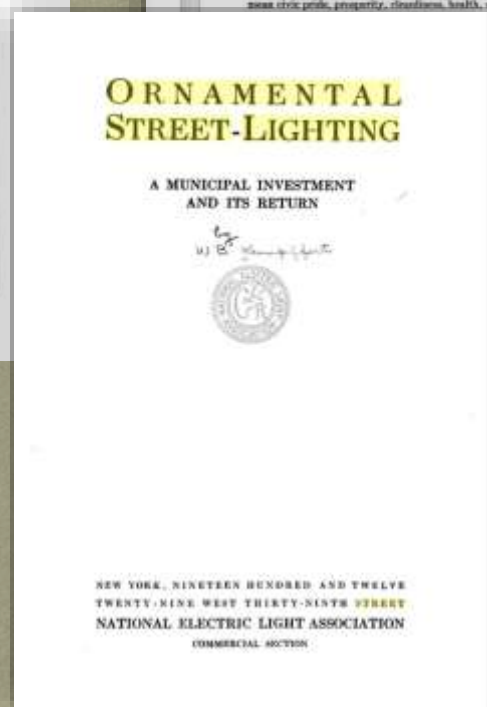
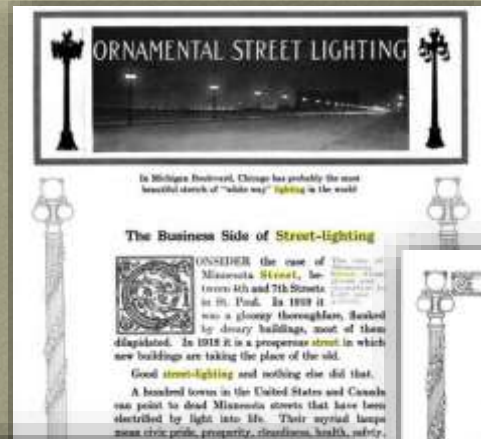




275210 FURN 9 ROYALUX ORNAMENTAL UNIT NO. 118 RIPPLED GLOBE, NO. 118 RIPPLED CANOPY, TYPE 2 CASING  
JANUARY 1912

The above photo was used as a specification for a lighting project in approximately 1930.

The illustrations to the right are from a Google eBook called "Ornamental Street-lighting: A Municipal Investment and Its Return" written in 1912.



The City of Warren had Ornamental Street Lighting in 1912



**Mahoning Historical Lighting Project  
November 2, 2010**





*Garbage Incinerator - Breaking Ground - Sept. 27<sup>th</sup> 1949*



Parkman Road NW Phase 2 - 2011



*Pine Ave Widening & Storm - 1984*



RED RUN COMBINED SEWER EXT.  
LOOKING EAST

RACKARD ELEC. CO. CONTRACT  
MAY 18, 1937



*Pine Ave Widening & Storm - 1984*



Parkman Road NW Phase 2 - 2011





*Pine Ave Widening & Storm - 1984*



*Red Run Combined Sewer (West Branch)-Tunnel Under Erie R.R.(Mainline)- Nov. 1948*



Parkman Road NW Phase 2 - 2011



RED RUN COMBINED SEWER EXT.  
END OF EXISTING 72" SEWER  
DANA ST. NE. & PAIGE AVE.  
MAY 18, 1937

# Warren Blvd SE Bridge Construction - ODOT Project - 2012





ON CENTER LINE OF EASTLAND AVE. LOOKING WEST

N

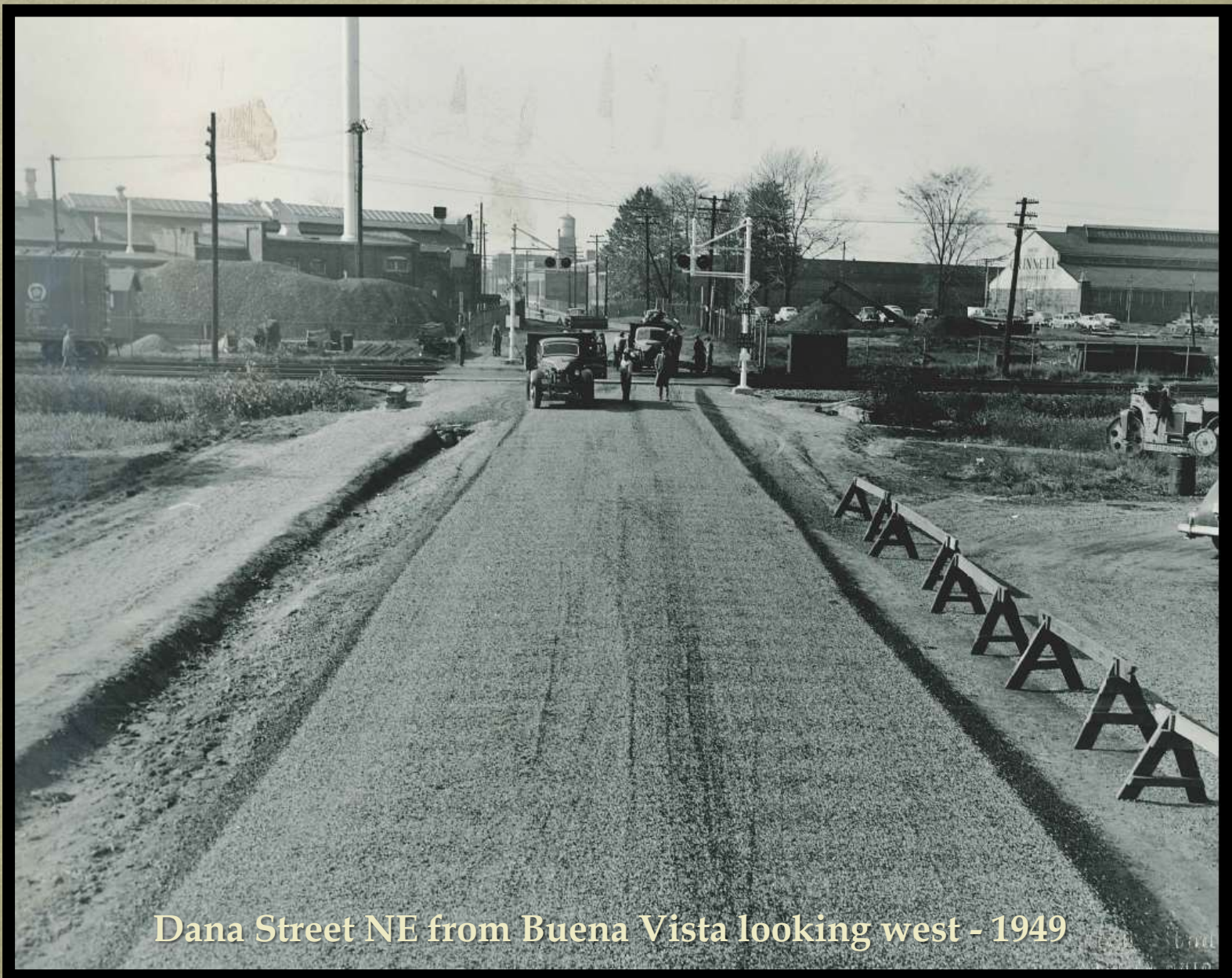


*EAST MARKET ST. EASTLAND AVE. LOOKING WEST 5-26-39 No.*



Parkman Road NW Phase 2 - 2011

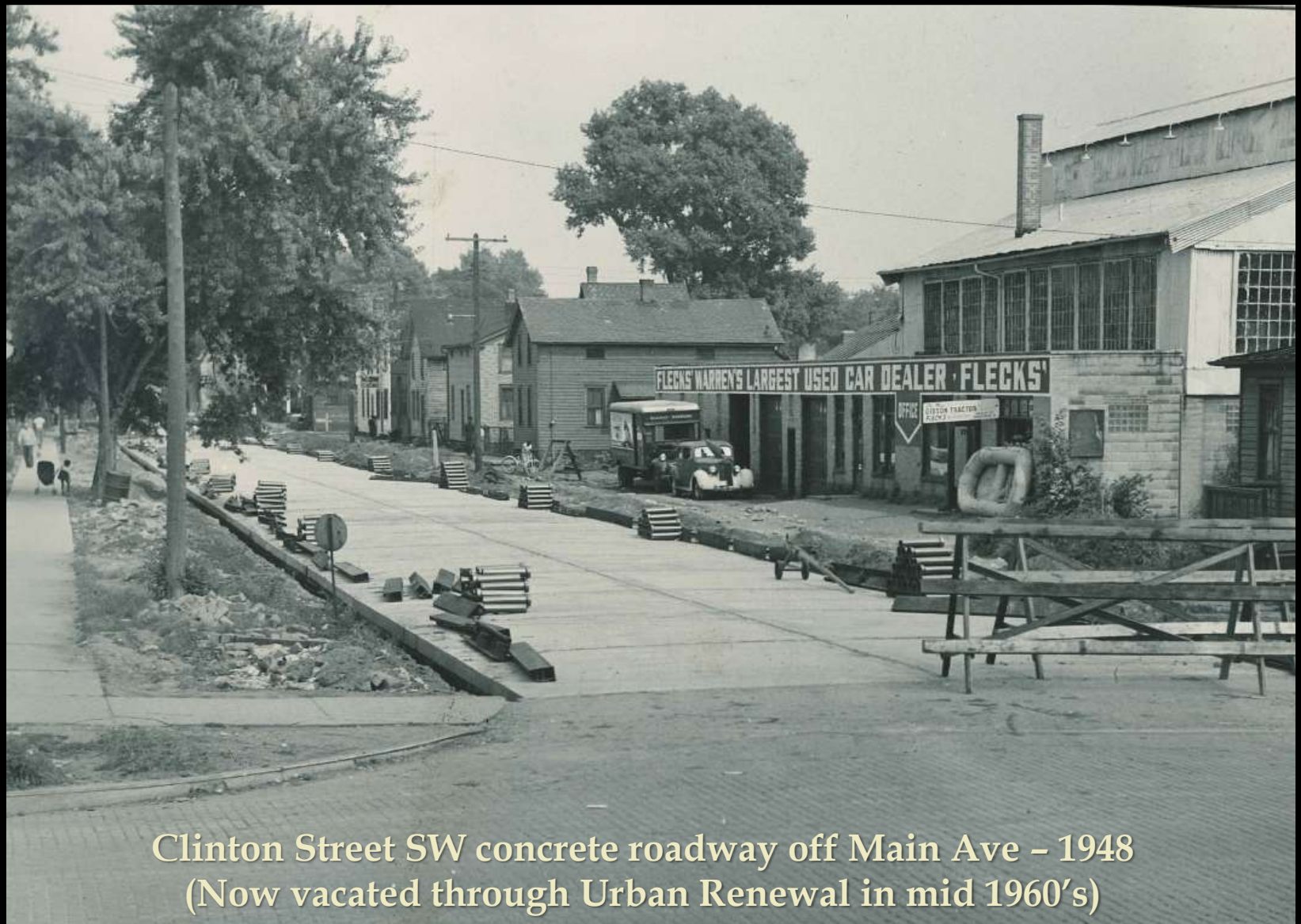




Dana Street NE from Buena Vista looking west - 1949



**Parkman Road NW Phase 2 - 2011**



Clinton Street SW concrete roadway off Main Ave - 1948  
(Now vacated through Urban Renewal in mid 1960's)



*Tod Ave NW Reconstruction & Safety - 1993*

## Parkman Road NW Phase 2 - 2011





WEST MARKET ST. BEFORE RAISING & WIDENING  
LOOKING EAST FROM ANGLE POINT  
OCT. 3, 1925.

## Warren Blvd Bridge - ODOT Project - 2011





WEST MARKET ST SHOWING FILL COMPLETED  
LOOKING EAST FROM ANGLE POINT  
MARCH 11 1926





*Pine Ave Widening & Storm - 1984*



WEST MARKET ST AFTER RAISING AND WIDENING  
LOOKING EAST FROM ANGLE POINT  
AUG 15 1926



Parkman Road Phase 3 - April 2015



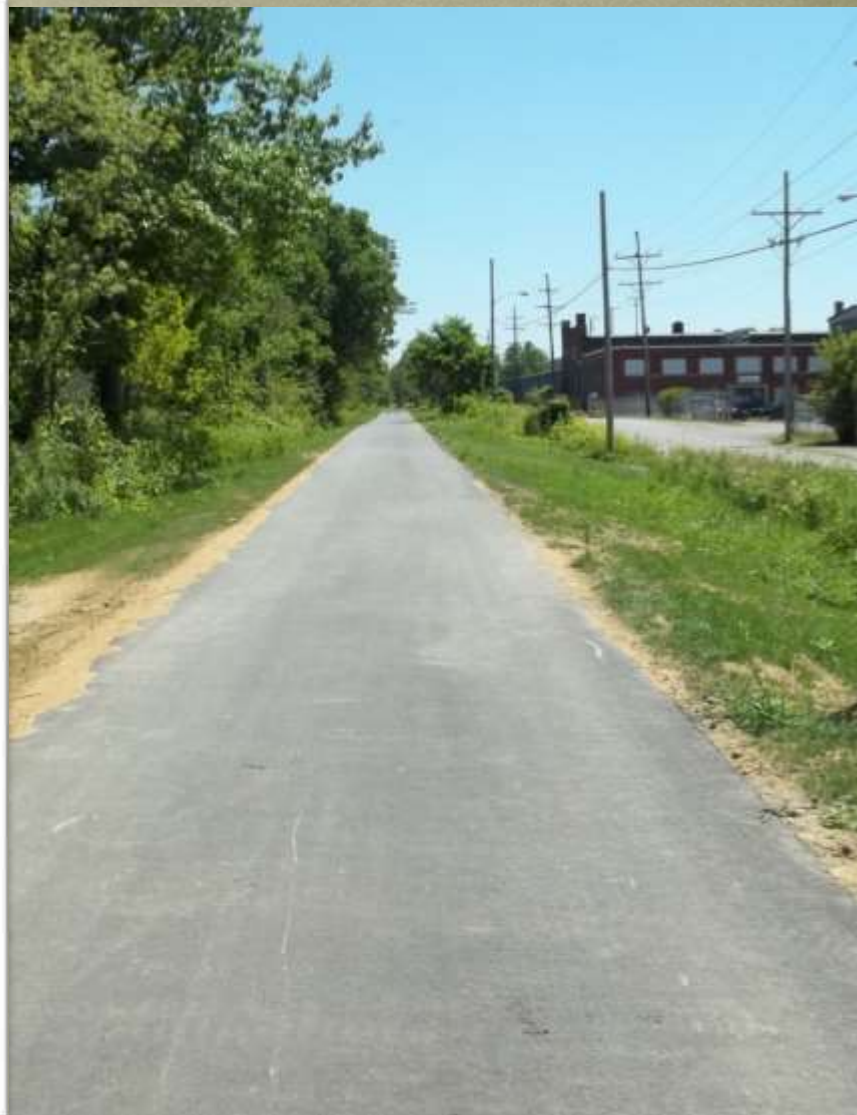
*Pine Ave Widening & Storm - 1984*



**Downtown Sidewalk Project – Franklin Street  
October 17, 2011**



*Railroad along Thomas Rd SE*  
1983



*Warren Greenway Bike Trail*  
2013

OCT. 3, 1925.





*WEST MARKET ST AFTER RAISING AND WIDENING  
LOOKING EAST FROM HIGHLAND AVENUE  
AUG 15 1926*





**New Gateway Sign at Intersection of West Market St. and South St.  
April 29, 2015**